

QUESTION OF THE DAY: A SWOT ANALYSIS OF DAILY TEXTING



AGENDA

Introduction

QotD Survey Responses

The SWOT

Further Observations

What did I miss? Q&A

BRIAN WARD

President- VPGR Board of Directors

Certified Gambling Recovery Mentor

International Gambling Recovery Specialist;
Board Approved Recovery Advisor

Father; Martial Artist; Musician; SMART

Facilitator; Husband; CGAC-R

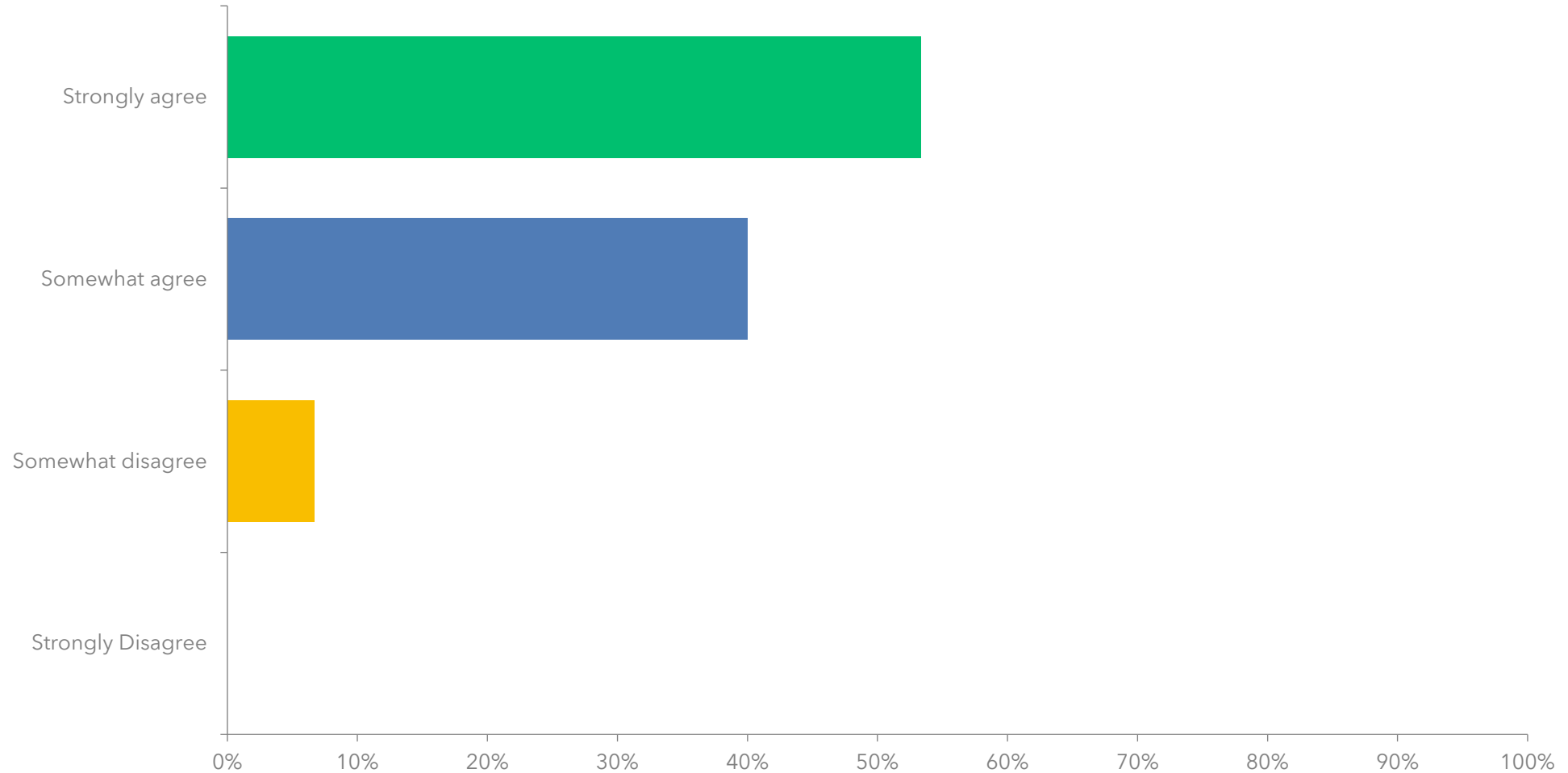




THE POWER OF TEXTING

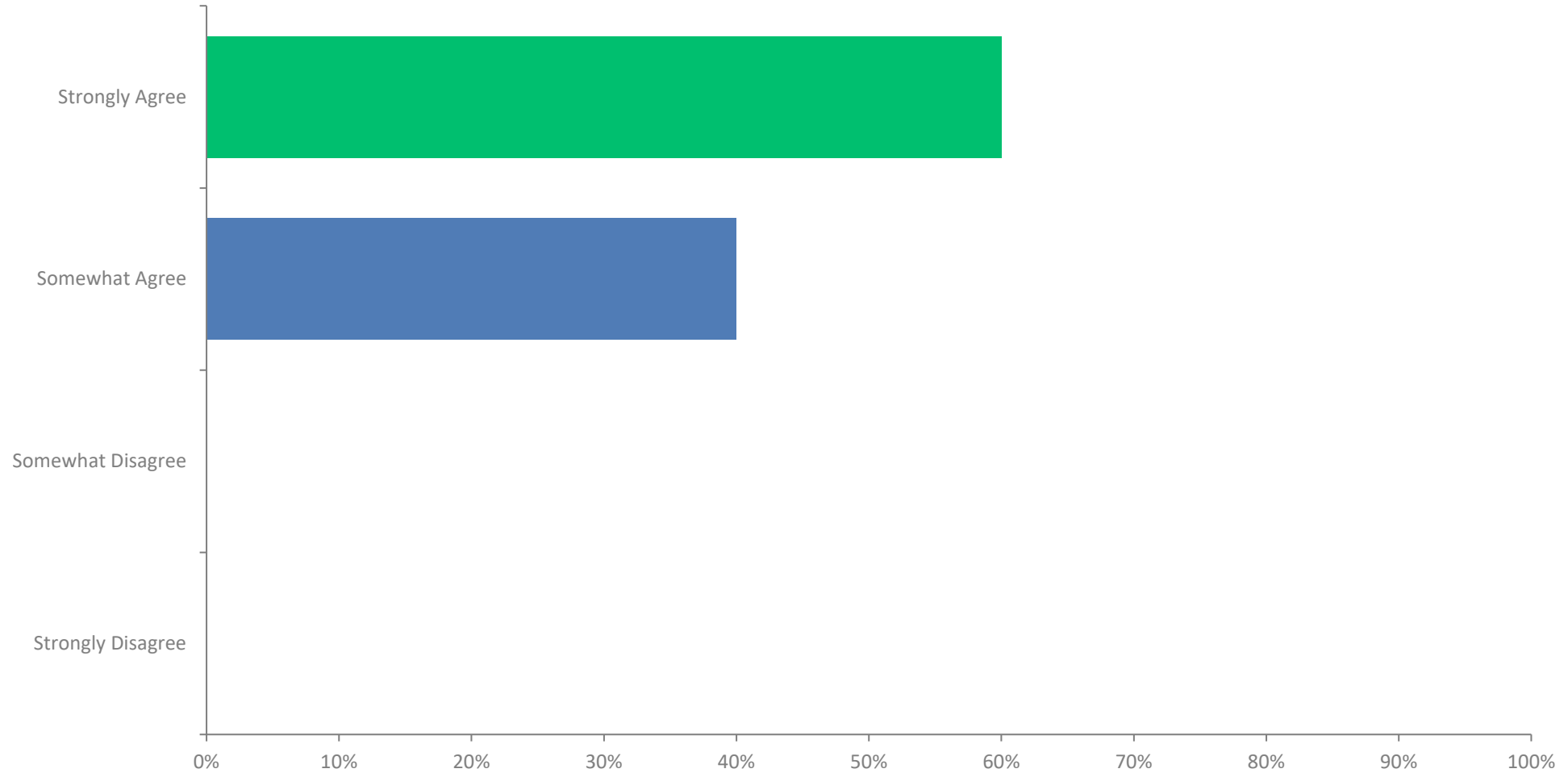
Q1: The Questions of the Day (QotD) help me feel more connected to my peer

• Answered: 15 Skipped: 0



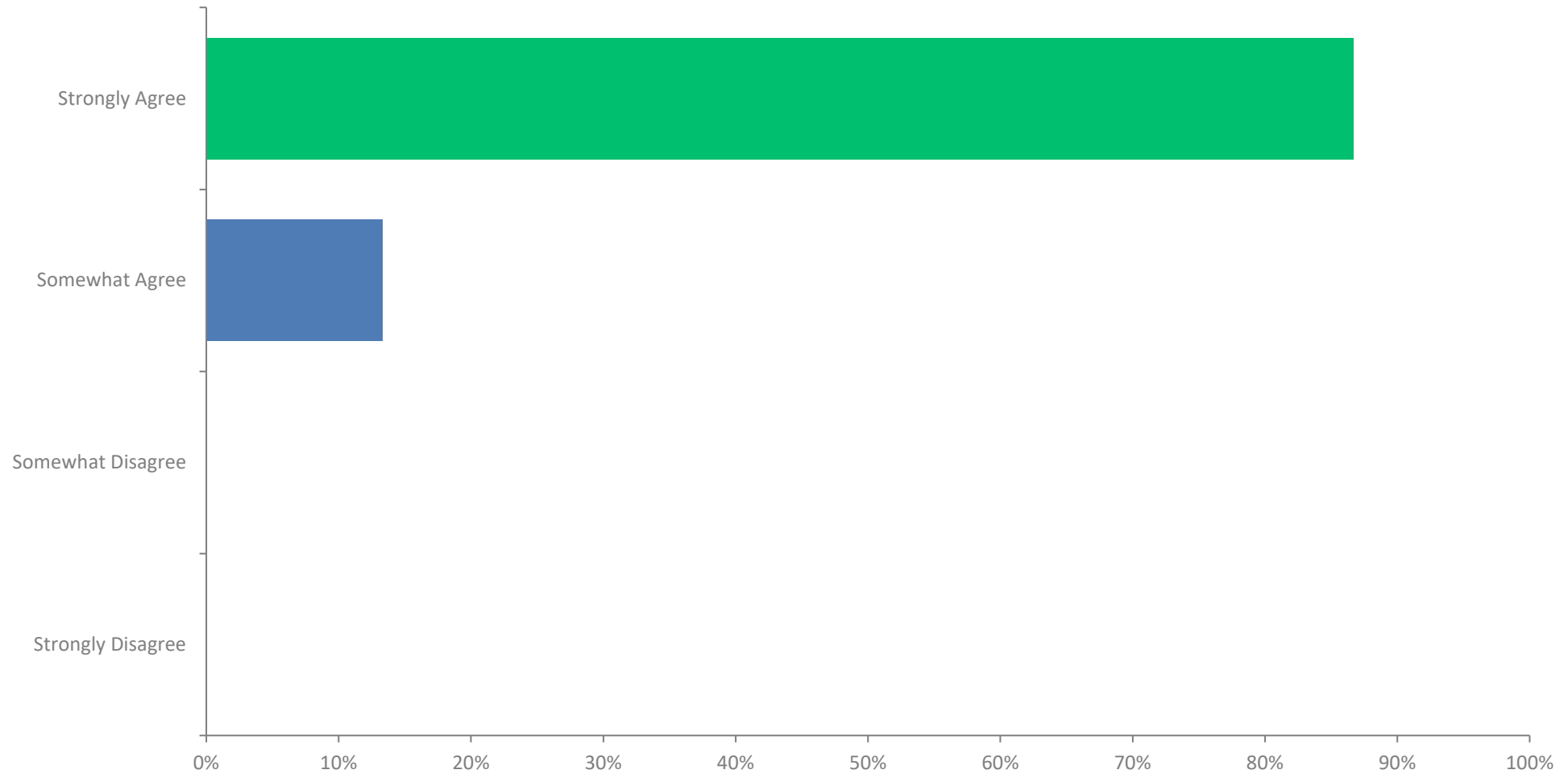
Q2: The QotD help make connecting with my peer more flexible

Answered: 15 Skipped: 0



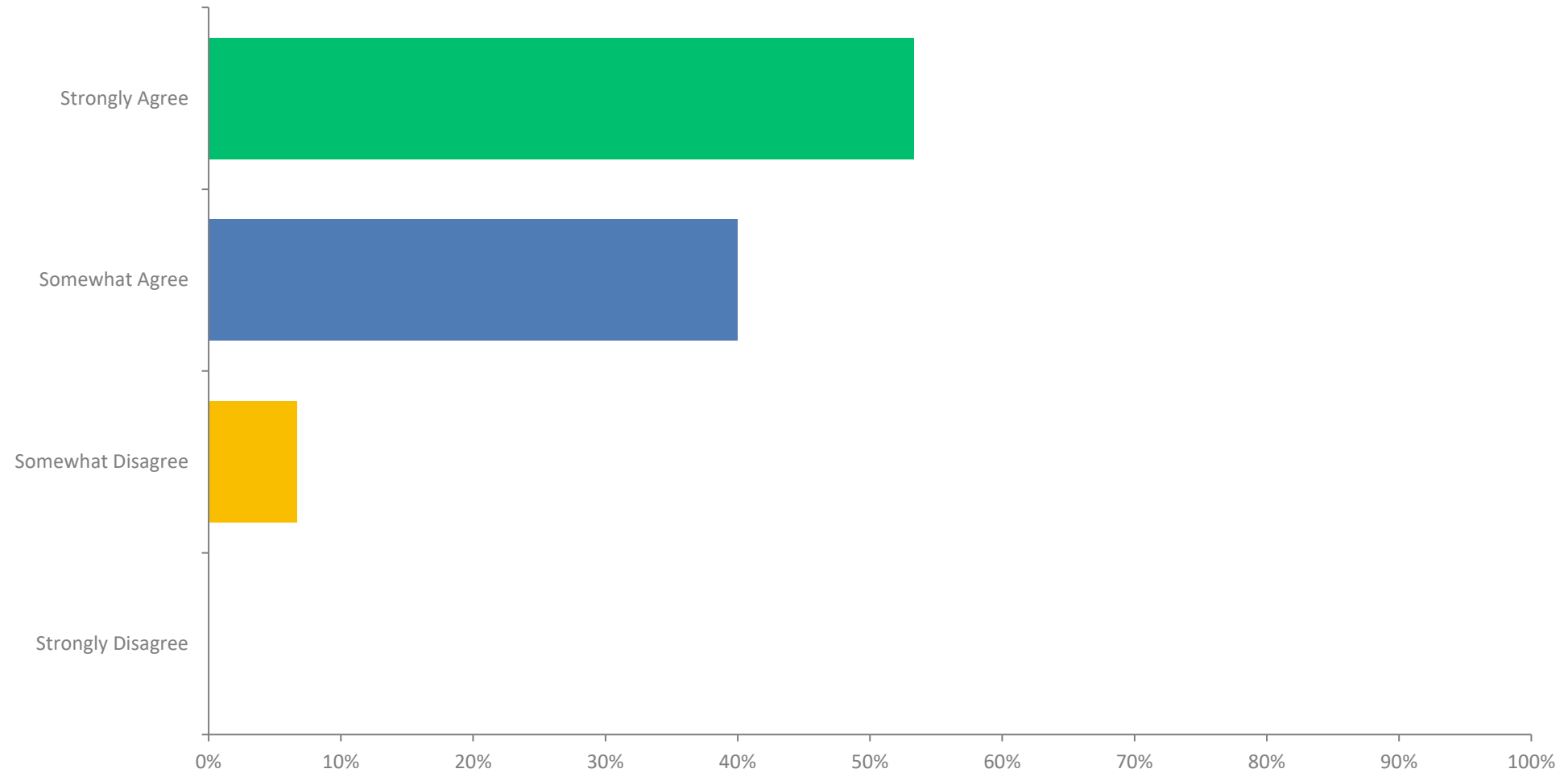
Q3: The QotD are thoughtful

Answered: 15 Skipped: 0



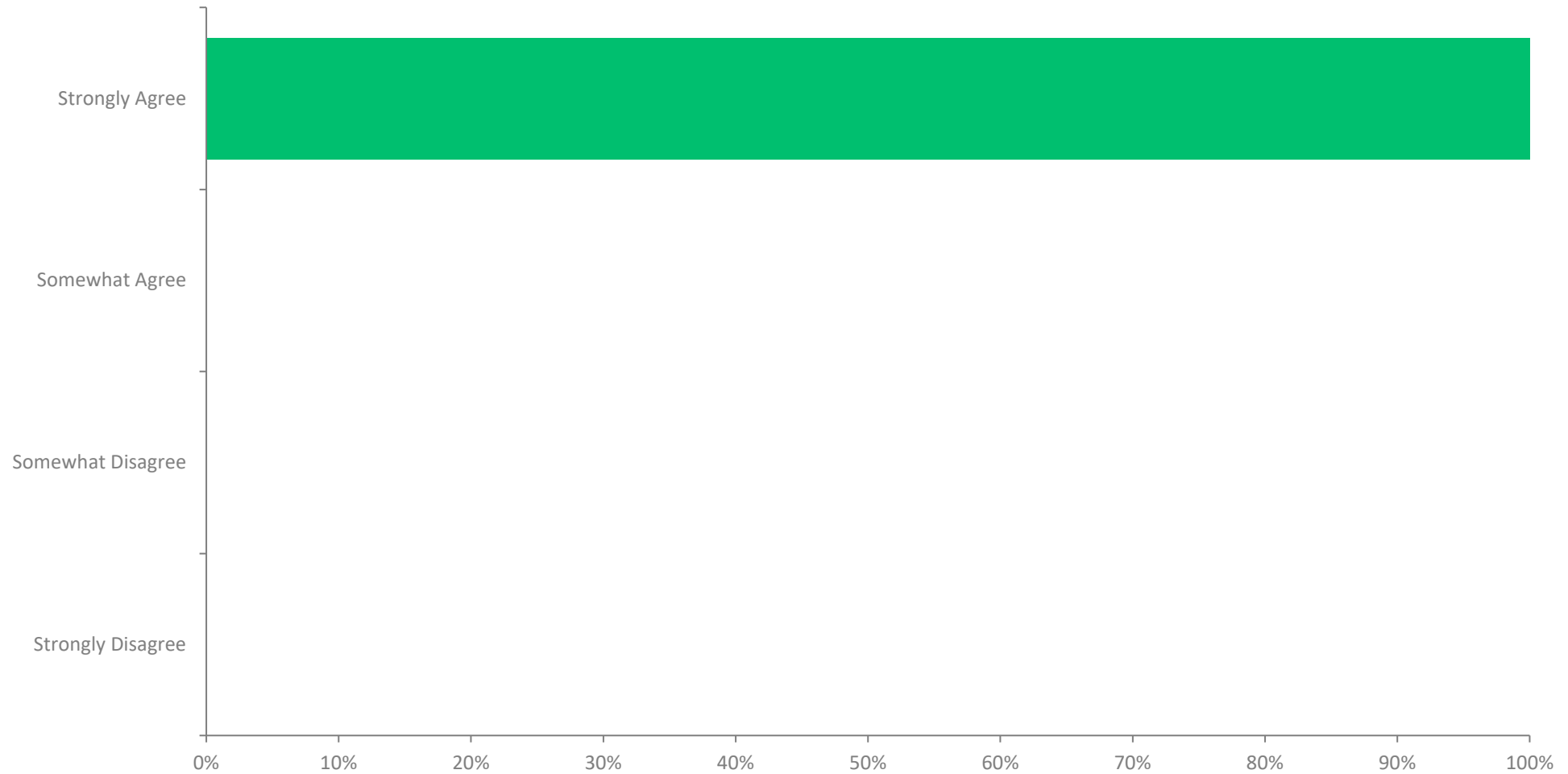
Q4: The QotD help me understand my recovery journey better

Answered: 15 Skipped: 0



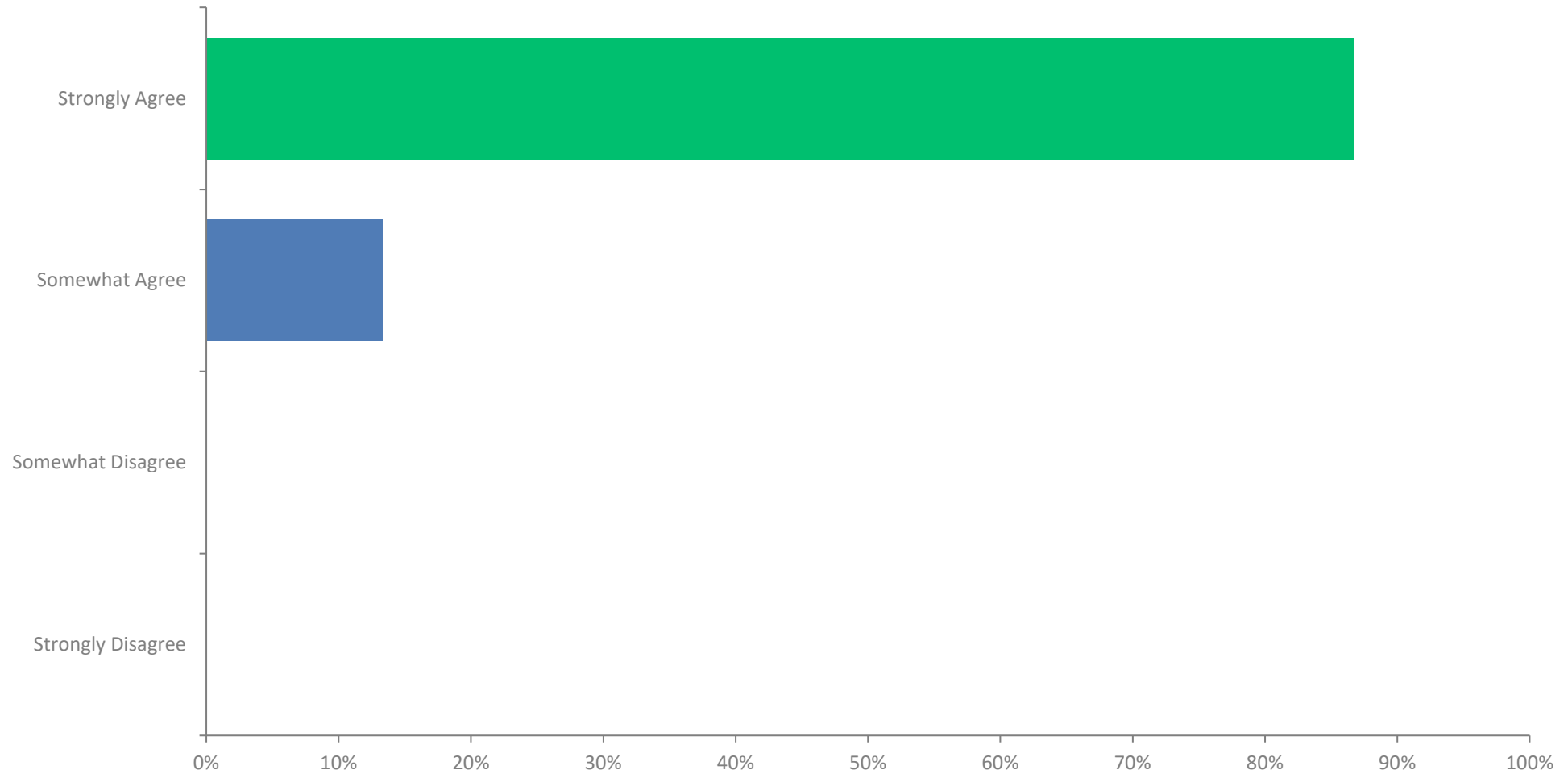
Q5: The QotD are easy to understand

Answered: 15 Skipped: 0



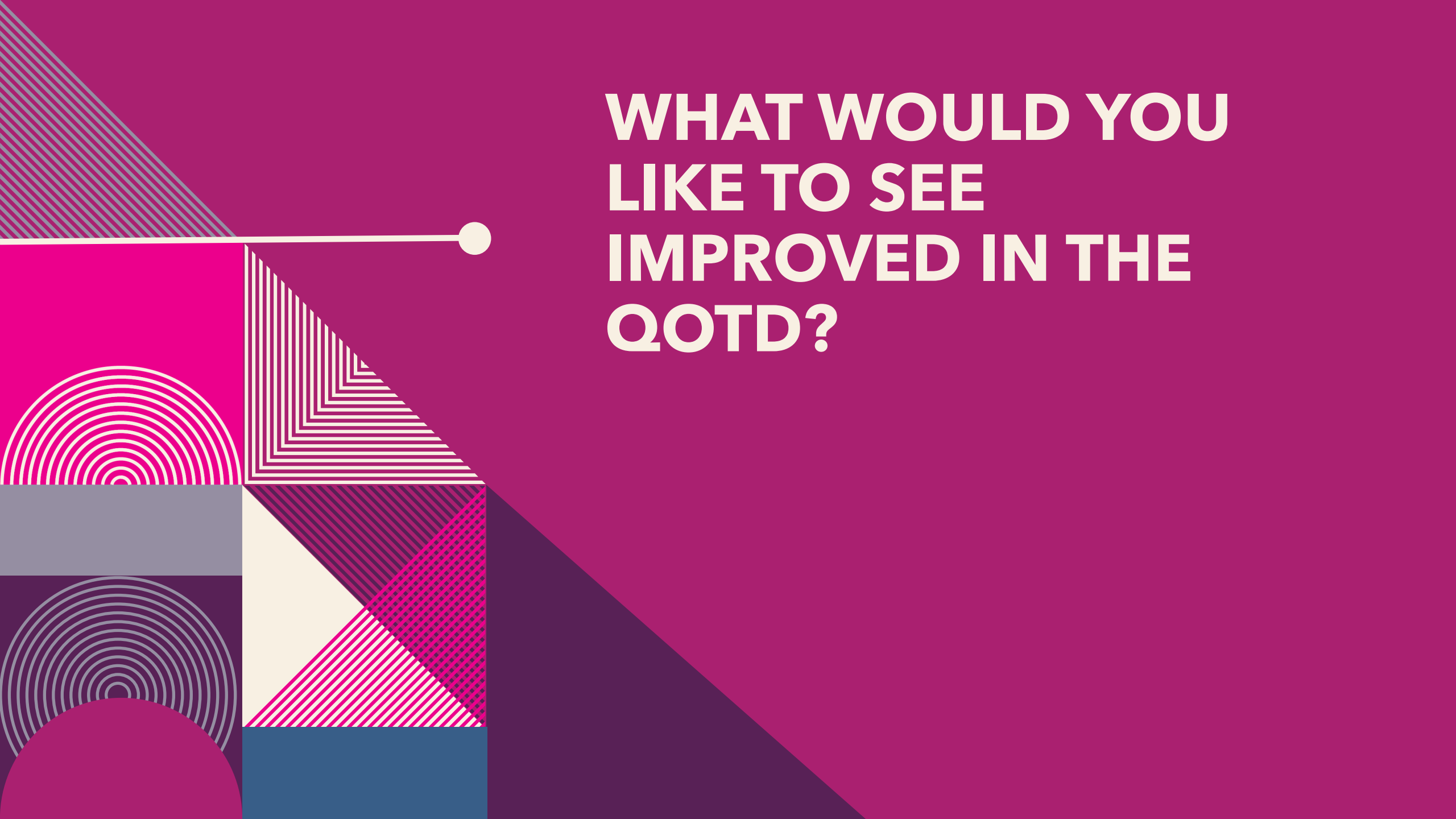
Q6: The QotD vary in topics

Answered: 15 Skipped: 0



SOME OF THE QUESTIONS

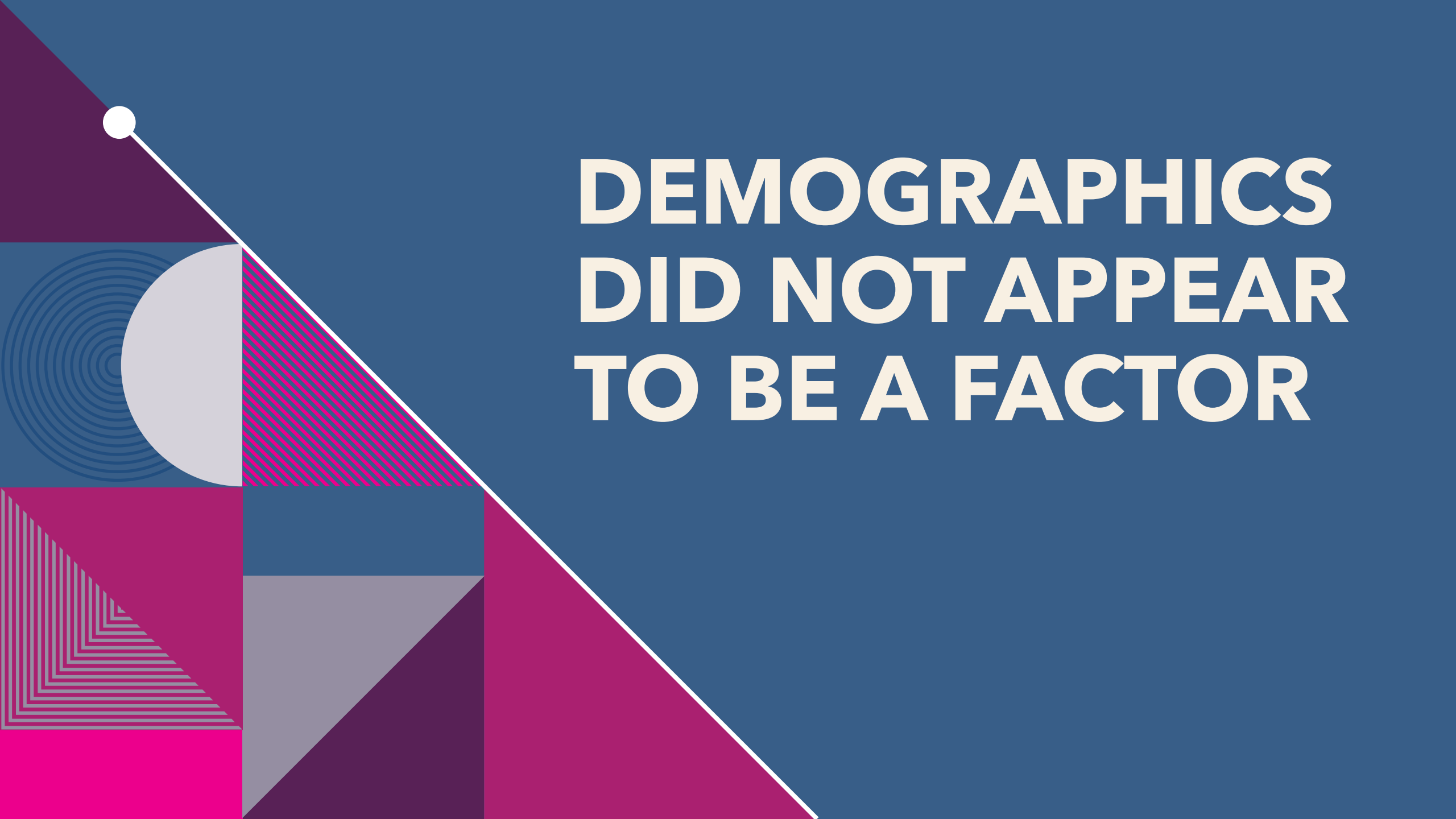
- What is a small change you can make this week? (Do something daily)
- How are you connecting with your community this week? (72 hour)
- What is an activity you like to do when the weather cools? (4th Principle)
- What do you do to help process uncomfortable news? (3rd Principle)
- What is a boundary you've been afraid to set (Money Barriers)
- What is your goal for the week? (1st Principle)
- Who do you talk to when things get hard? (Include Friends and Family)
- What is something you want to talk about this week (Meet with supports)
- Who do you trust talking to about difficult times? (2nd Principle)

The background is a vibrant, abstract composition. It features a grid of colored squares in shades of magenta, grey, dark purple, and blue. Overlaid on these are various geometric patterns: concentric white circles in the top-left and bottom-left, a series of parallel white lines forming a triangular shape in the top-right, and a pattern of parallel lines in the bottom-right. A white horizontal line with a circular end cap extends from the left edge across the top of the grid.

**WHAT WOULD YOU
LIKE TO SEE
IMPROVED IN THE
QOTD?**

The background features a complex geometric design. On the left, there are several overlapping shapes: a large pink square with a white concentric arc pattern, a grey square, a dark purple square with a white concentric arc pattern, and a blue square. A white horizontal line with a circular dot at its end extends from the top left towards the center. The right side of the image is a solid, vibrant pink color.

**ANY OTHER
THOUGHTS ON THE
QOTD?**



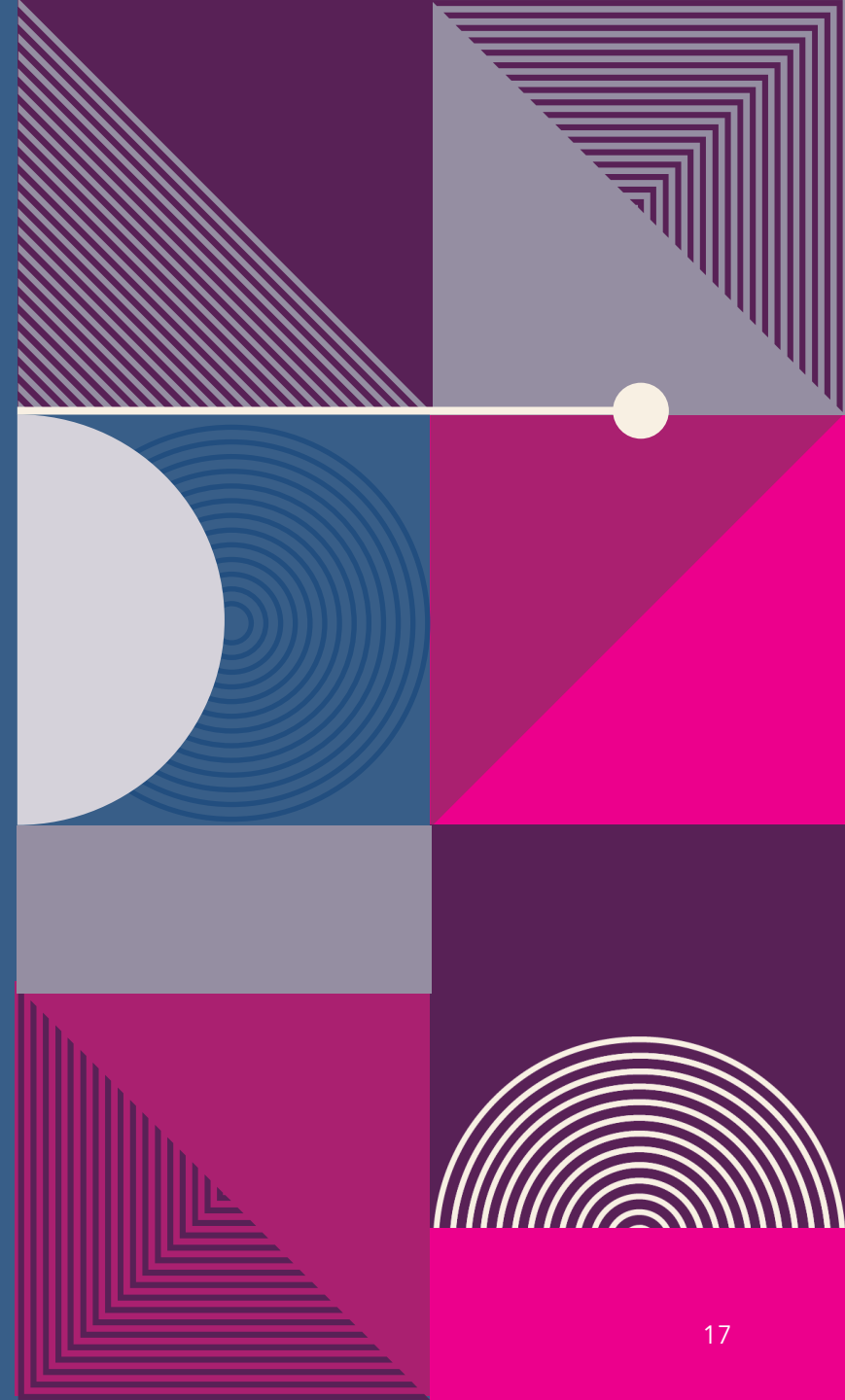
**DEMOGRAPHICS
DID NOT APPEAR
TO BE A FACTOR**




STRENGTHS

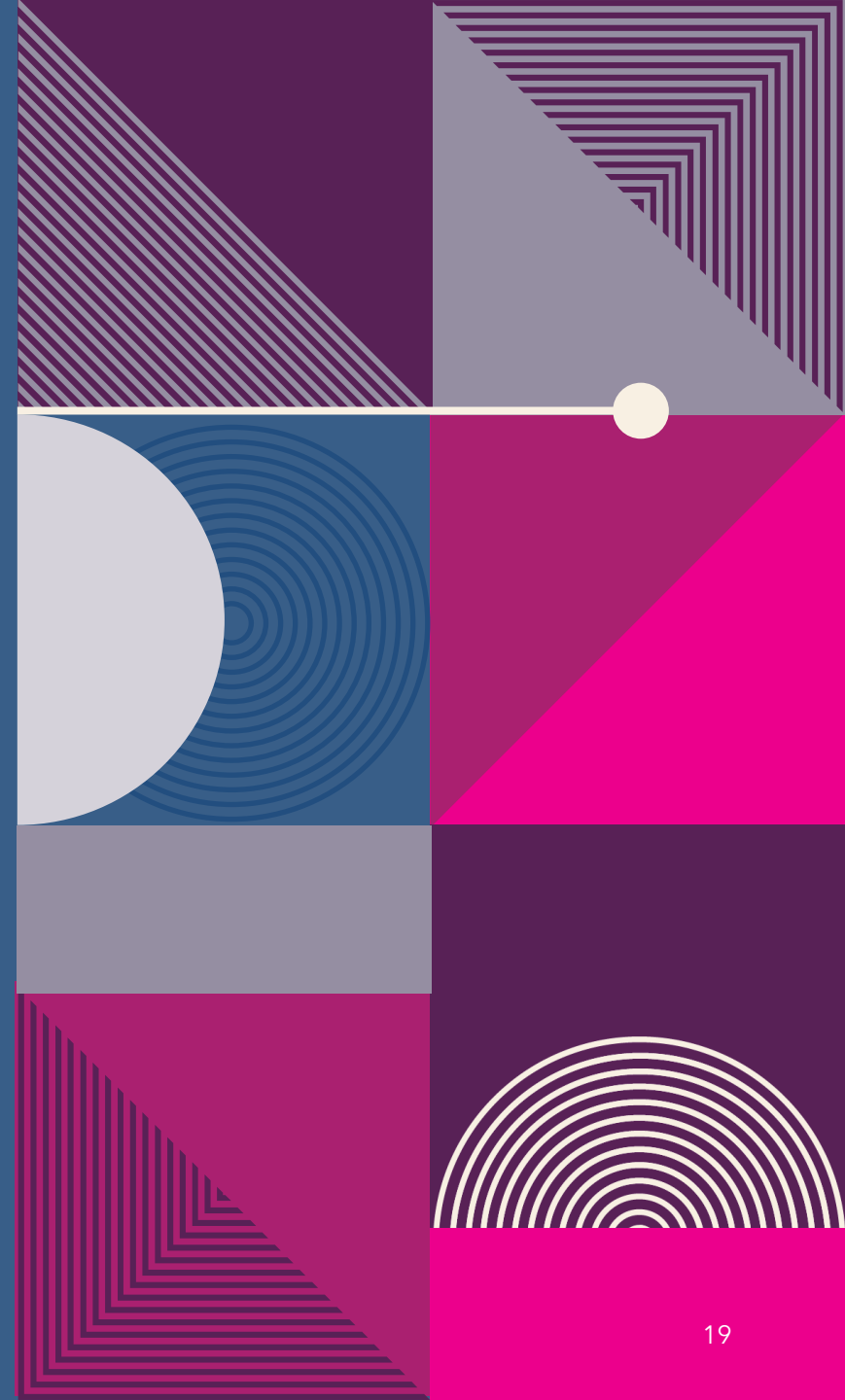
- 
- ACCESS**
 - FLEXIBILITY**
 - EASE**
 - CONSENT**
 - COMMUNICATION**
 - VARIETY**
 - PRIVACY**

WEAKNESSES



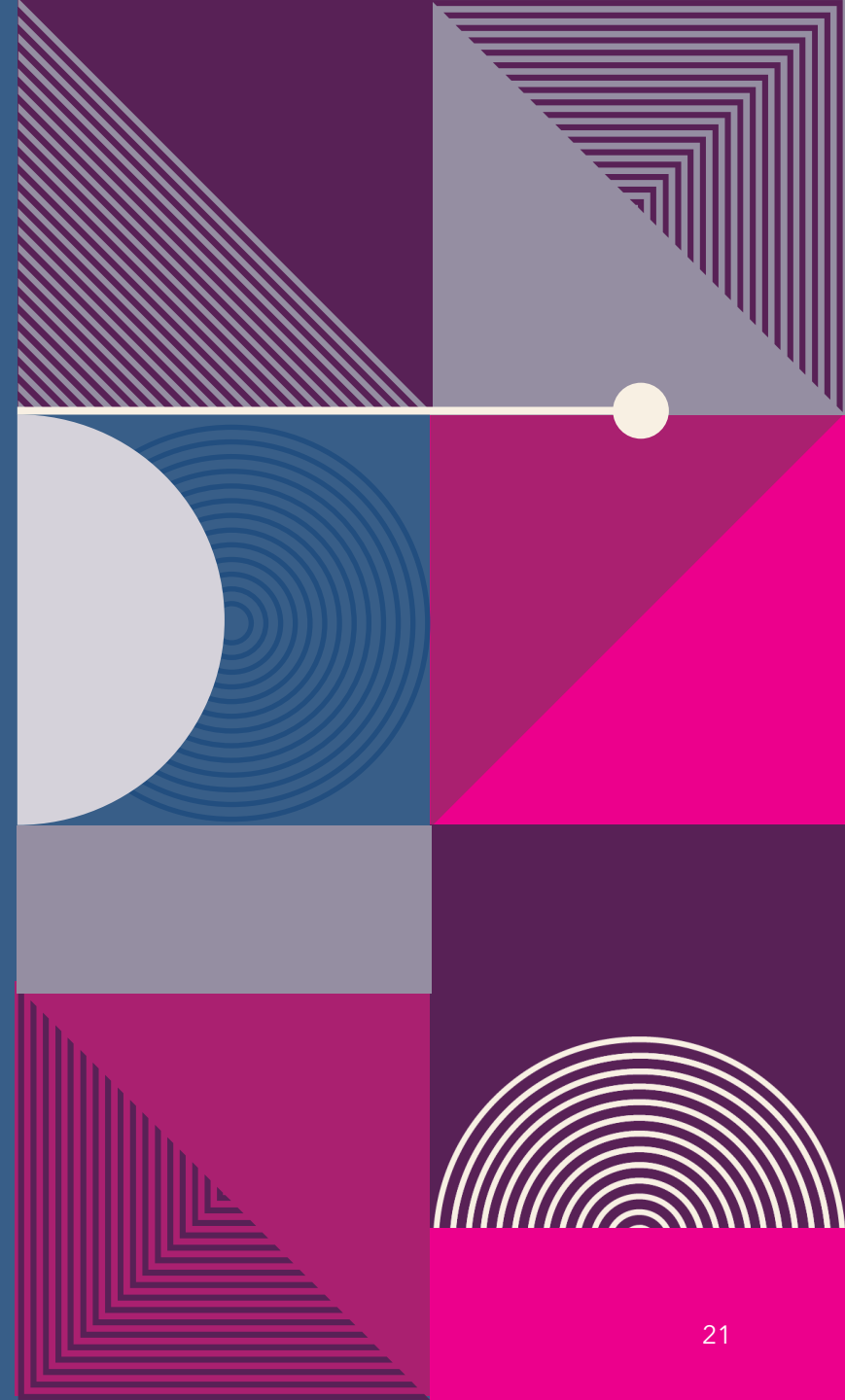
- 
- An abstract geometric design on the left side of the slide. It features a grid of colored squares (pink, grey, dark purple, blue) with various patterns: concentric circles, parallel lines, and a grid of dots. A white line with a dot at the end extends from the top left towards the center.
- INCONSISTENCY**
 - COMPREHENSION**
 - BOUNDARIES**
 - PRESSURE**
 - STANDARDIZATION**
 - TRACKING**

OPPORTUNITIES



- 
- TRANSLATION**
 - STANDARDIZATION**
 - TECHNOLOGY**
 - THERAPY**
 - COMMUNICATION**
 - QUALITATIVE**

THREATS





- CLARITY**
- PRIVACY**
- HACKING**
- STANDARDS**



IN CLOSING



ASSETS FROM LEWIS AND CLARK PGAM PROGRAM

Holding Slide. Awaiting assets

Q&A





THANK YOU

Brian

Brian.w.cgrm@gmail.com

www.vpgr.net