

# Family Gambling Recovery

Renée Siegel,

MA, LISAC, MAC, ICGC-II, BACC, HHP, ACC, CPIC



# Course Description

- Addictions, whether substance abuse or behavioral have an impact on families and loved ones. There are many similarities, also many differences. With the addition in the DSM-V of Gambling Disorder as an addiction, one might assume that using the same interventions with family members of problem gamblers as those used with substance abusers are effective. This is not necessarily true. Understanding the differences in how addictions impact substance abuse families and gambling disordered families and how different treatment interventions are used can make a difference in treatment outcomes for all.

-

# Learning Objectives

---

1. The importance of an accurate assessment

---

2. When should family members get involved

---

3. What needs to be done first

---

4. Specific financial and legal issues in community property states

---

5. Preparing all for the potential long haul

# Polling Slide

- Are you currently working with any family members impacted by a gambling disorder?
- Yes
- No

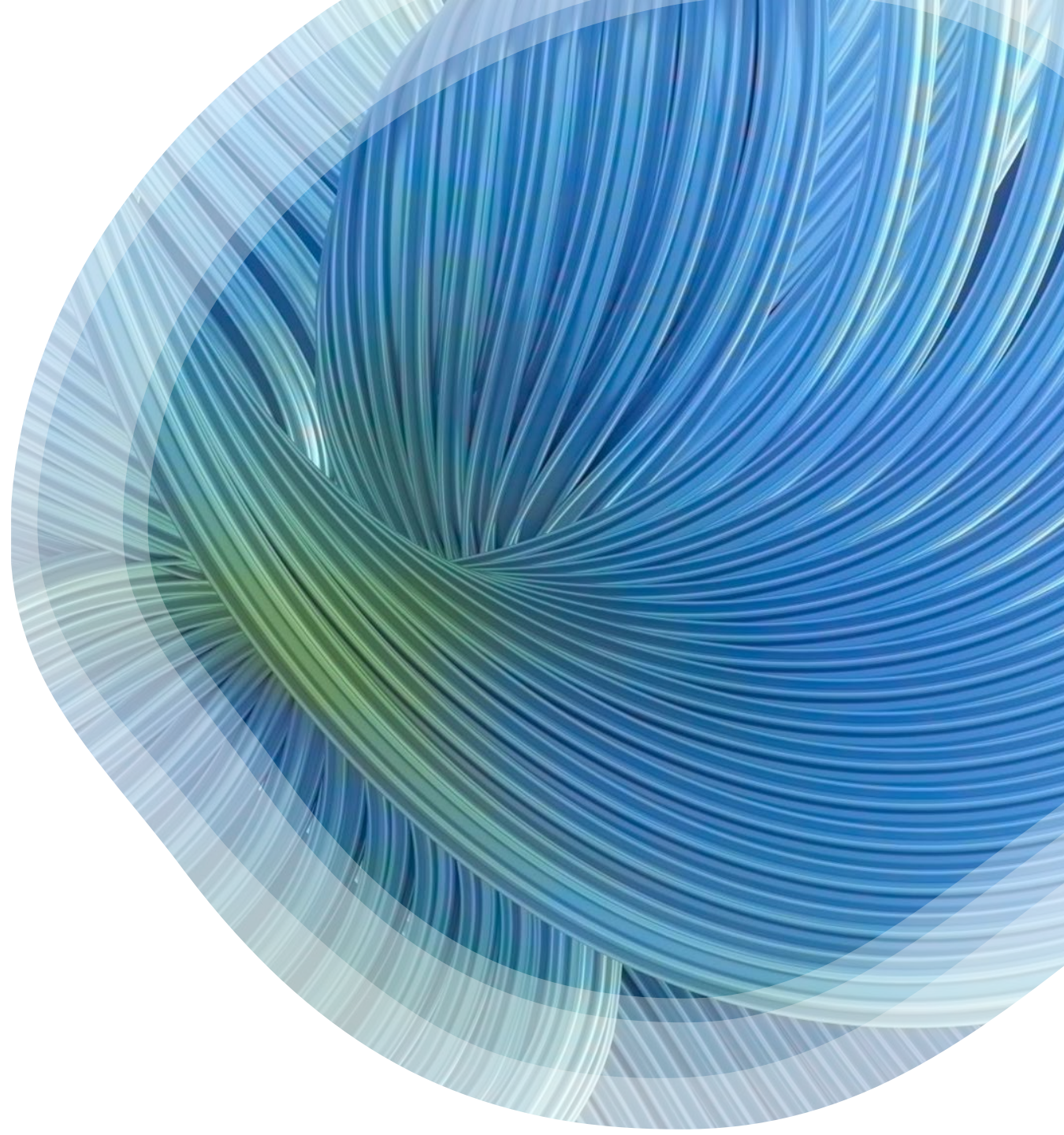
# Aren't all addictions the same?


- Process vs. Substance Addiction
  - Can't see it
  - Can't smell it
  - Mistaken absences of gambler for periods of time
    - Infidelity
    - Unhappiness within the family system

Aren't all  
addictions the same?


Legal  
Issues

Financial  
Issues





Aren't all  
addictions the  
same?

- Reinforcement in addictive behavior
    - Positive
    - Negative
    - Intermittent
- 

## ■ Treatment specifics

- Where do we start?
- Personal safety
- Education
- Family treatment
- Ethics
- Special issues







# Assessment

- Family Safety and Evaluation of the crises?
  - Suicidal risk
  - Violence – abuse and neglect
- Overview of the financial situation
  - Who has the money?
  - Who can handle the money?
    - Who is the gambler?
    - Cultural considerations

Education first,  
process work next

Where/how is the impact  
felt?

Financially

Legally

Betrayal

# Polling Question

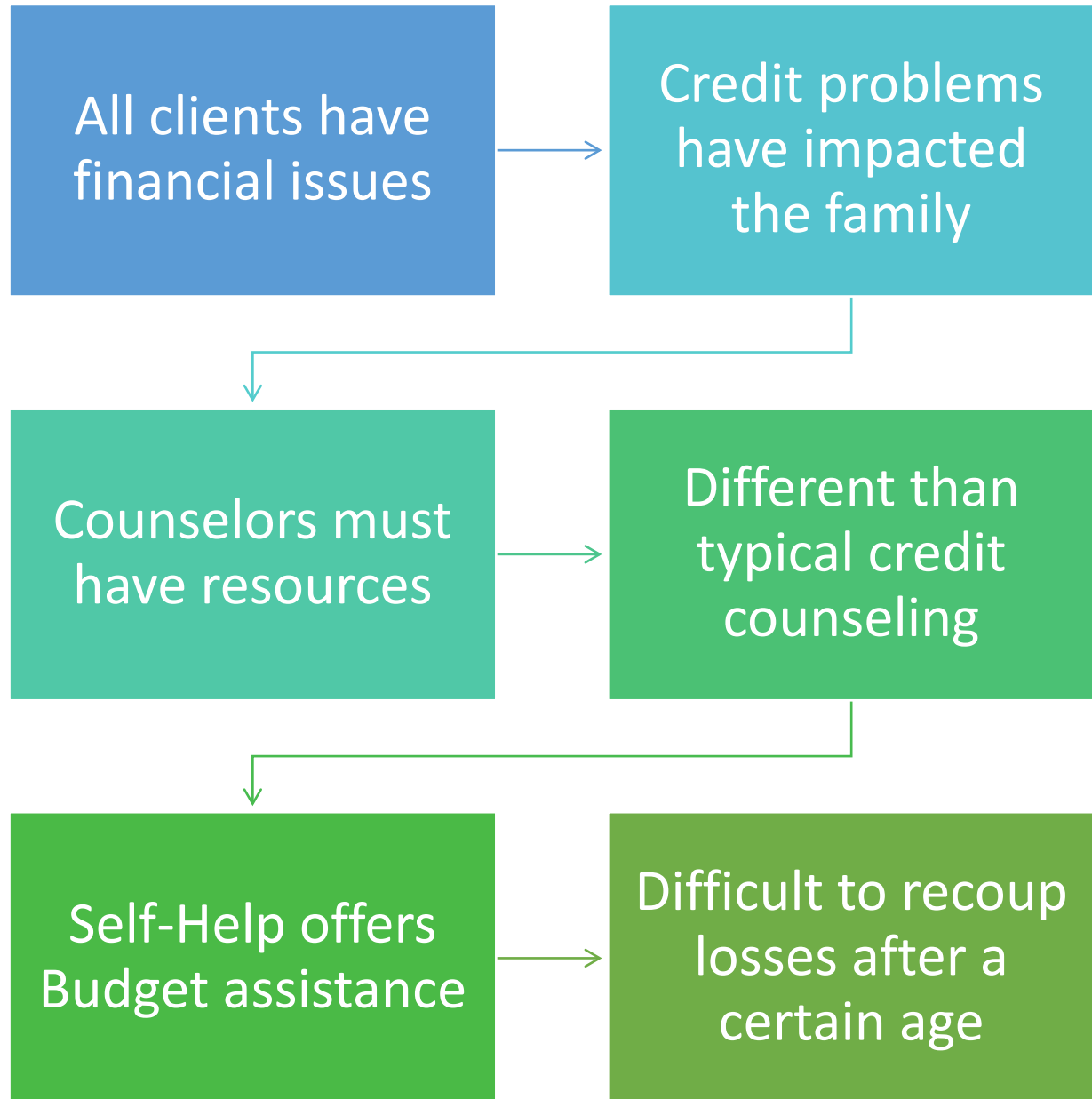
- Do you have an understanding of how the legal issues of community property law impact the spouses of gambling disordered clients?
- Yes
- Somewhat
- No



## The Basics: Legal Differences

- Legal Issues
- Need for Resources
- Not many judges and lawyers understand
  - Gambling court and Drug court

# The Basics: Financial Issues






## The Basics: Legal Differences

- Community Property and Common-Law Title
  - Criminal and Civil Issues
  - Spouse responsible
  - Implications for harm reduction



## Active case management

- Optimal resources
    - Legal knowledgeable professionals
    - Financial knowledgeable about gambling
  - Ongoing crises
  - Unfolding of the truth
  - Need to get family involved
- 

# BOUNDARIES, BOUNDARIES, BOUNDARIES

TRUST WITH  
VERIFICATION

WHO NEEDS  
PROTECTION







## PROTECT YOURSELF LEGALLY & FINANCIALLY

Treatment  
specifics:

When the Gambler  
Refuses Treatment

- STOP THE FINANCIAL BLEEDING
  - PULL A CREDIT REPORT ASAP
  - CHANGE ALL PASSWORDS ON ACCOUNTS
  - TRY TO GET A QUIT CLAIM DEED ON YOUR HOME
  - KNOW YOUR STATE LAWS!
- 



THANKS  
Q & A

Renée Siegel  
[renee@urpurepotential.com](mailto:renee@urpurepotential.com)  
[www.urpurepotential.com](http://www.urpurepotential.com)  
480-688-4999